



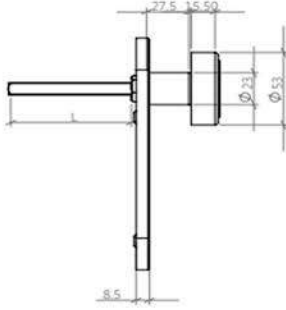
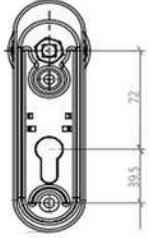
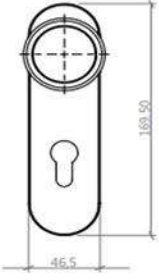
Always Safe Exit

Her Zaman Güvenli çıkış



OMN 66 M TPK TECHNICAL DATA SHEET

OMN 66 M TPK TEKNİK DETAYLAR



66 M



TECHNICAL DETAILS

- *Fire-resistant plastic handle with cylinder hole
- *Plastic material contains polypropylene (black PP 30% ca Co3)
- *Used with cylinder for lockig door from outside
- *Steel core and plate coated with fire resistant plastic
- *Suitable for mortise locks that have centre distance of 72mm
- *Square spindle is 9mm
- *Certified according to DIN 18273 FS
- *Used with OMN-600G series panic exit and also used double sided (handle+handle)

TEKNİK DETAYLAR

- Yangın ve duman kontrollü kapılar için uygundur.
- 600 G panik bar ve 660 Serisi Gömme kilitler ile uyumlu.
- DIN Sağ ve Dın Sol uyumlu
- Plastik kapak ve kol, çelik çalışan parçalar.
- Kilitlenebilir.
- Barel set içeriğe dahil değildir.
- Renk Seçenekleri :Kapak ve Kol -Siya